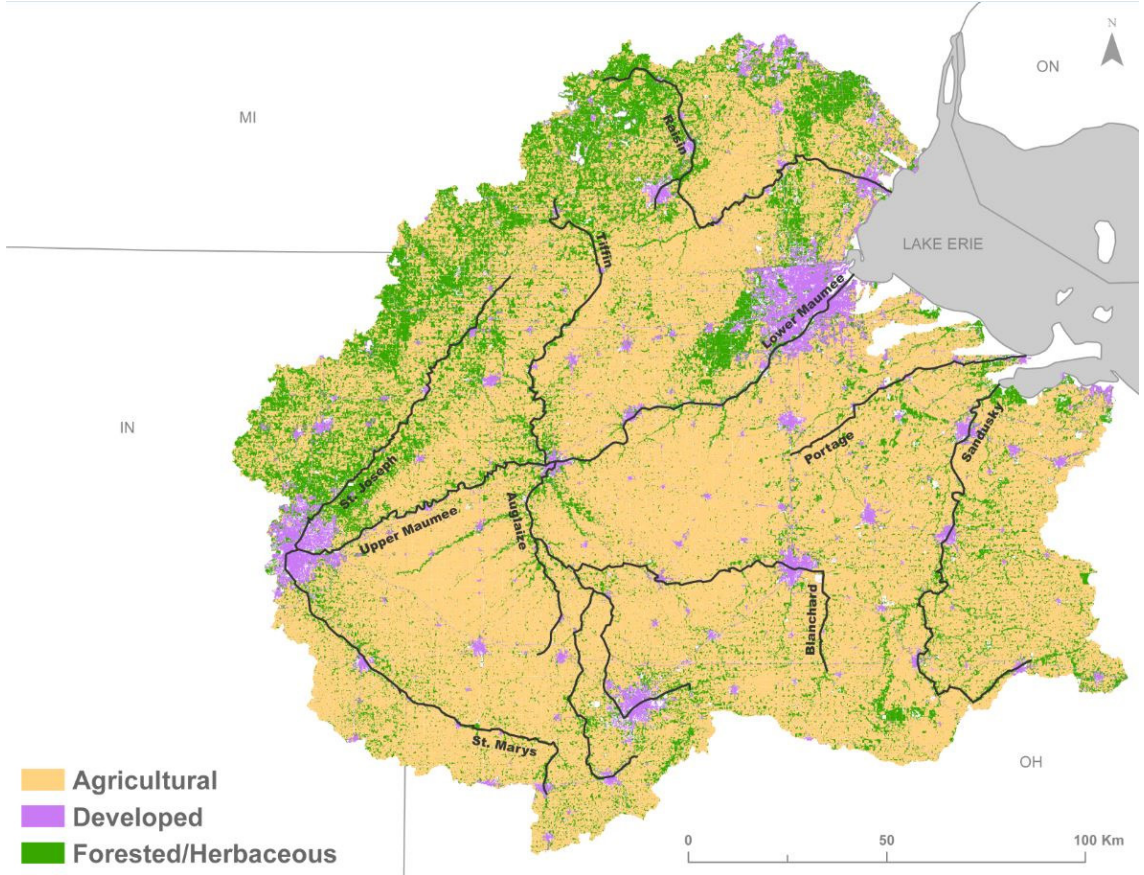




Life on Fort Wayne's Rivers

- Vocab:**
- Plankton
 - Phytoplankton
 - Watershed
 - Invasive
 - Non Invasive
 - Native
 - Species
 - Endangered
 - Groundwater
 - Runoff
 - Water Table
 - Point Source
 - Pollution
 - Headwaters
 - Open Water
 - Wetland
 - Contamination
 - Pesticide
 - Fertilizer



This is a map of the watershed from Fort Wayne to Lake Erie. Utilize what you know about developed areas, agricultural practices, and forested regions to explain where point source pollution might be found on this map. Include how point source pollution can affect wildlife living in/around the rivers.
